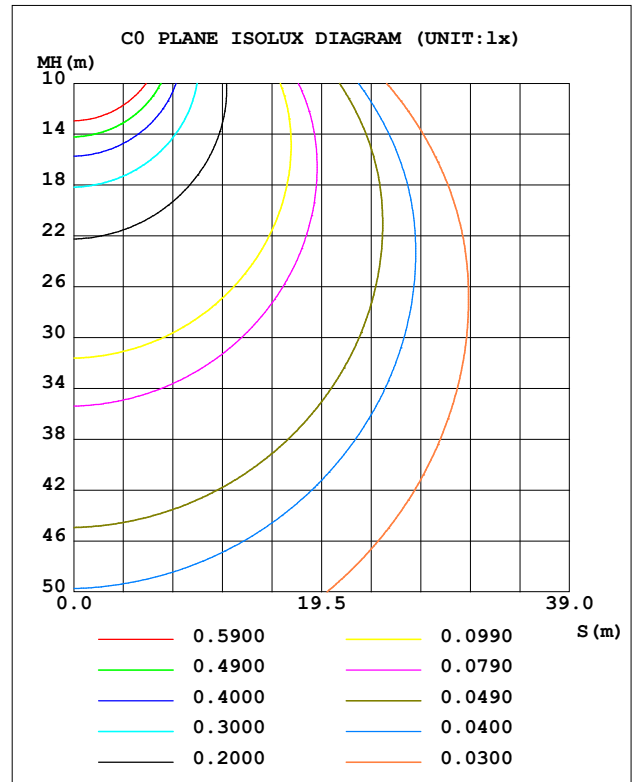
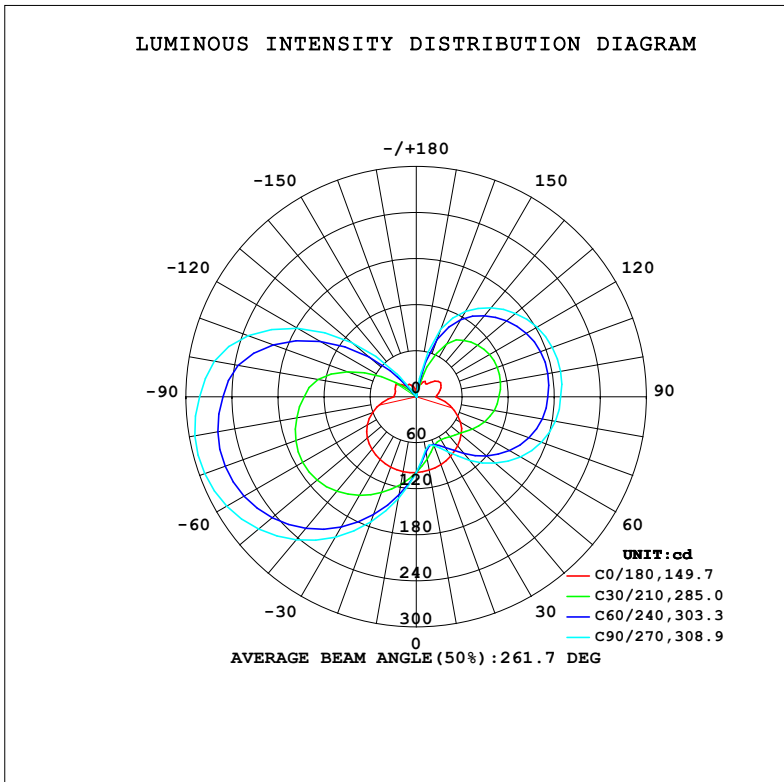


LUMINAIRE PHOTOMETRIC TEST REPORT

NAME: 95MALIA24LED/WH	TYPE:	WEIGHT: 1
SPEC.:	DIM.: 270 x 120 x 110	SERIAL No.: 0
MFR.: Elmark Industries JSC	SUR.: 4 circler	Shielding Angle:

DATA OF LAMP		PHOTOMETRIC DATA			
MODEL	MALIA24LED/WH	Imax (cd)	294.3	S/MH (C0/180)	1.44
NOMINAL POWER (W)	24	LOR (%)	118.0	S/MH (C90/270)	2.89
RATED VOLTAGE (V)	230	TOTAL FLUX (lm)	1557.0	η UP, DN (C0-180)	27.0, 24.8
NOMINAL FLUX (lm)	1320	CIE CLASS	DIFFUSE	η UP, DN (C180-360)	21.9, 44.3
LAMPS INSIDE	1	η up (%)	48.9	CIBSE SHR NOM	1.50
TEST VOLTAGE (V)	230	η down (%)	69.1	CIBSE SHR MAX	1.55



C Range: 0 - 360DEG
C Interval: 10.0DEG
Test Speed: HIGH
Temperature: 25.3°C
Operators:
Test Date: 03 January 2023

γ Range: 0 - 170DEG
 γ Interval: 5.0DEG
Test System: EVERFINE GO-2000A_V1 SYSTEM V2.00.456
Humidity: 65.0%
Test Distance: 6.340m [K=1.0000]
Remarks:

ZONAL FLUX DIAGRAM

ZONAL FLUX DIAGRAM:

γ	C0	C45	C90	C135	C180	C225	C270	C315	γ	Φ zone	Φ total	%lum,lamp
10	97.27	77.29	70.31	78.38	99.07	123.5	134.3	122.0	0- 10	9.507	9.507	0.61,0.72
20	94.17	65.58	67.73	65.56	97.66	149.6	173.7	146.2	10- 20	29.40	38.90	2.5,2.95
30	89.66	69.85	82.80	68.22	94.59	174.5	211.2	169.1	20- 30	52.66	91.56	5.88,6.94
40	83.86	81.56	108.5	77.79	89.89	195.8	243.5	188.5	30- 40	79.61	171.2	11,13
50	76.61	98.63	134.7	92.55	83.46	211.7	268.3	202.9	40- 50	108.4	279.6	18,21.2
60	66.66	115.4	156.9	108.1	74.02	220.8	285.0	210.5	50- 60	135.2	414.7	26.6,31.4
70	53.19	129.5	173.6	121.6	60.70	222.0	293.2	210.7	60- 70	156.2	570.9	36.7,43.3
80	38.08	139.5	184.2	131.4	45.06	216.5	292.9	204.6	70- 80	169.0	739.9	47.5,56.1
90	25.54	144.2	188.2	136.2	29.42	204.7	282.3	192.6	80- 90	172.0	911.9	58.6,69.1
100	30.03	147.5	191.1	139.7	28.04	188.4	267.2	176.7	90-100	167.0	1079	69.3,81.7
110	34.19	146.8	188.6	139.4	29.37	152.0	233.0	141.3	100-110	150.9	1230	79,93.2
120	36.95	141.9	181.7	135.0	30.95	101.2	178.6	92.28	110-120	122.7	1352	86.9,102
130	31.92	132.9	169.2	126.7	24.99	45.49	110.6	39.75	120-130	89.15	1442	92.6,109
140	21.82	120.1	151.3	114.8	18.16	6.839	38.50	5.797	130-140	56.73	1498	96.2,114
150	23.35	101.3	128.5	99.26	19.12	2.273	1.075	2.127	140-150	33.31	1532	98.4,116
160	17.67	61.10	93.77	64.26	14.67	4.943	1.050	4.648	150-160	18.74	1550	99.6,117
170	10.29	7.365	24.14	11.92	10.92	3.793	1.141	3.697	160-170	6.218	1557	100,118
180	0	0	0	0	0	0	0	0	170-180	0.3241	1557	100,118
DEG	LUMINOUS INTENSITY:cd									UNIT:lm		

Conical surface Flux(90deg): 221.8 lm

%lum = 14.2%

%lamp = 16.8%

Conical surface Flux(130deg): 490.67 lm

%lum = 31.5%

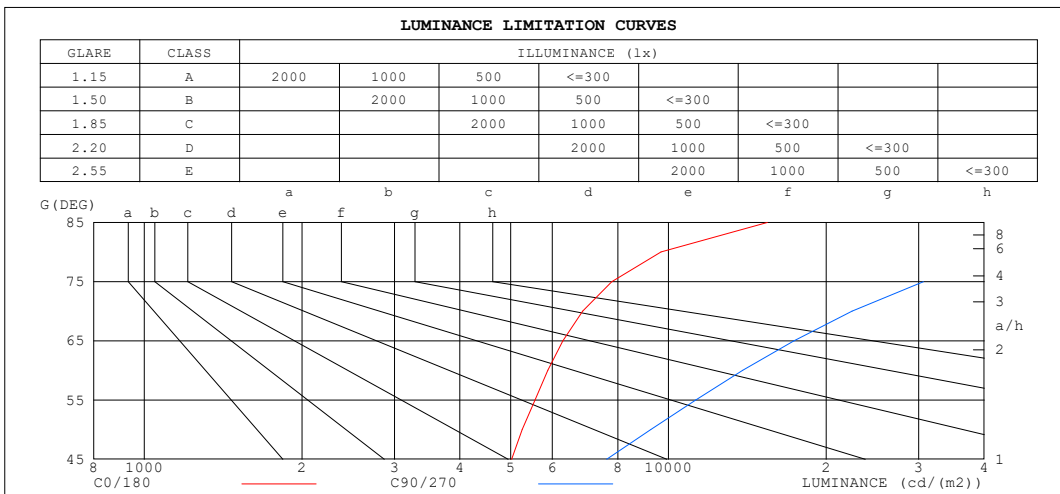
%lamp = 37.2%

C Range: 0 - 360DEG
C Interval: 10.0DEG
Test Speed: HIGH
Temperature:25.3°C
Operators:
Test Date:03 January 2023

γ Range: 0 - 170DEG
 γ Interval: 5.0DEG
Test System:EVERFINE GO-2000A_V1 SYSTEM V2.00.456
Humidity:65.0%
Test Distance:6.340m [K=1.0000]
Remarks:

LUMINANCE LIMITATION CURVES

NAME: 95MALIA24LED/WH	TYPE:	WEIGHT: 1
SPEC.:	DIM.: 270 x 120 x 110	SERIAL No.: 0
MFR.: Elmark Industries JSC	SUR.: 4 circler	Shielding Angle:



LUMINANCE cd/(m2)		
G (DEG)	C0/180	C90/270
85	15433	94758
80	9674	46823
75	7799	30644
70	6860	22408
65	6285	17342
60	5882	13854
55	5559	11264
50	5258	9252
45	5018	7620

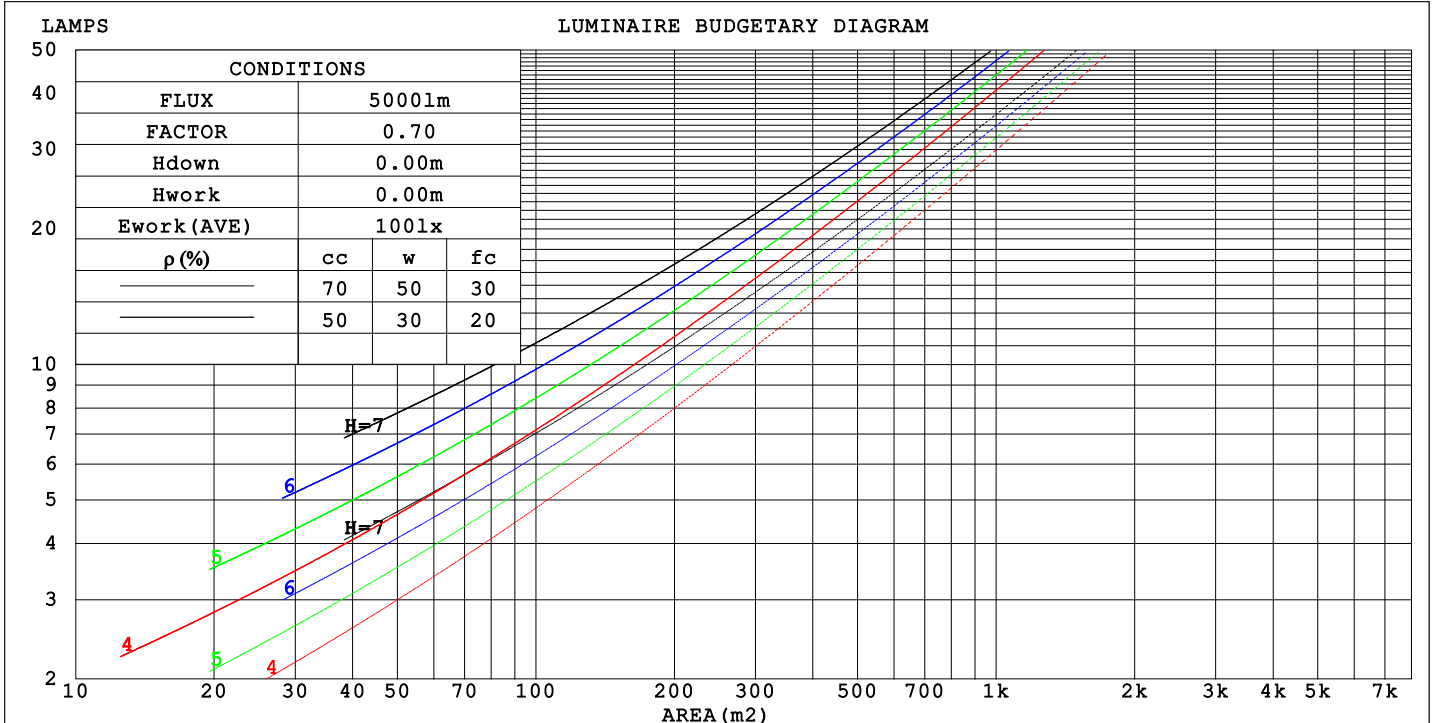
C Range: 0 - 360DEG
C Interval: 10.0DEG
Test Speed: HIGH
Temperature: 25.3°C
Operators:
Test Date: 03 January 2023

γ Range: 0 - 170DEG
γ Interval: 5.0DEG
Test System: EVERFINE GO-2000A_V1 SYSTEM V2.00.456
Humidity: 65.0%
Test Distance: 6.340m [K=1.0000]
Remarks:

CU AND LUMINAIRE BUDGETARY ESTIMATE DIAGRAM

NAME: 95MALIA24LED/WH	TYPE:	WEIGHT: 1
SPEC.:	DIM.: 270 x 120 x 110	SERIAL No.: 0
MFR.: Elmark Industries JSC	SUR.: 4 circler	Shielding Angle:

pcc	80%			70%			50%			30%			10%			0
pw	50%	30%	10%	50%	30%	10%	50%	30%	10%	50%	30%	10%	50%	30%	10%	0
pfc	20%			20%			20%			20%			20%			0
RCR	RCR:Room Cavity Ratio															



C Range: 0 - 360DEG
C Interval: 10.0DEG
Test Speed: HIGH
Temperature:25.3°C
Operators:
Test Date:03 January 2023

γ Range: 0 - 170DEG
γ Interval: 5.0DEG
Test System:EVERFINE GO-2000A_V1 SYSTEM V2.00.456
Humidity:65.0%
Test Distance:6.340m [K=1.0000]
Remarks:

WEC AND CCEC

NAME: 95MALIA24LED/WH	TYPE:	WEIGHT: 1
SPEC.:	DIM.: 270 x 120 x 110	SERIAL No.: 0
MFR.: Elmark Industries JSC	SUR.: 4 circler	Shielding Angle:

pcc	80%			70%			50%			30%			10%			0
pw	50%	30%	10%	50%	30%	10%	50%	30%	10%	50%	30%	10%	50%	30%	10%	0
pfc	20%			20%			20%			20%			20%			0
RCR	RCR:Room Cavity Ratio						Wall Exitance Coefficients(WEC)									
0.0																
1.0	.514	.292	.093	.491	.280	.089	.447	.256	.082	.406	.234	.075	.369	.214	.069	
2.0	.425	.233	.072	.404	.223	.069	.364	.202	.063	.327	.183	.057	.292	.165	.052	
3.0	.369	.196	.059	.349	.187	.056	.313	.169	.051	.279	.153	.047	.247	.137	.042	
4.0	.327	.170	.050	.309	.162	.048	.275	.146	.044	.244	.131	.040	.215	.117	.036	
5.0	.294	.150	.043	.277	.142	.041	.246	.128	.038	.218	.115	.034	.191	.102	.031	
6.0	.267	.134	.038	.252	.127	.037	.223	.114	.033	.197	.102	.030	.172	.091	.027	
7.0	.244	.121	.034	.231	.115	.033	.204	.103	.030	.180	.092	.027	.157	.081	.024	
8.0	.226	.110	.031	.213	.105	.030	.188	.094	.027	.166	.084	.024	.144	.074	.022	
9.0	.209	.101	.028	.197	.096	.027	.175	.086	.025	.154	.077	.022	.133	.068	.020	
10.0	.195	.094	.026	.184	.089	.025	.163	.080	.022	.143	.071	.020	.124	.063	.018	

pcc	80%			70%			50%			30%			10%			0
pw	50%	30%	10%	50%	30%	10%	50%	30%	10%	50%	30%	10%	50%	30%	10%	0
pfc	20%			20%			20%			20%			20%			0
RCR	RCR:Room Cavity Ratio						Ceiling Cavity Exitance Coefficients (CCEC)									
0.0	.597	.597	.597	.510	.510	.510	.348	.348	.348	.200	.200	.200	.064	.064	.064	
1.0	.598	.558	.522	.512	.479	.449	.350	.330	.311	.202	.191	.181	.065	.061	.058	
2.0	.592	.533	.484	.507	.459	.418	.347	.317	.292	.200	.185	.171	.064	.060	.056	
3.0	.584	.515	.460	.500	.444	.399	.344	.309	.280	.198	.180	.165	.064	.059	.054	
4.0	.575	.501	.446	.493	.433	.387	.339	.302	.273	.196	.177	.161	.063	.058	.053	
5.0	.566	.491	.435	.486	.425	.379	.335	.297	.267	.194	.174	.159	.062	.057	.052	
6.0	.557	.482	.428	.479	.417	.373	.330	.292	.264	.192	.172	.157	.062	.056	.052	
7.0	.549	.475	.423	.472	.411	.368	.326	.288	.261	.189	.170	.155	.061	.056	.051	
8.0	.541	.468	.419	.465	.406	.365	.322	.285	.259	.187	.168	.154	.061	.055	.051	
9.0	.533	.463	.416	.459	.402	.363	.318	.283	.257	.185	.167	.154	.060	.055	.051	
10.0	.526	.458	.413	.454	.398	.361	.315	.280	.256	.184	.166	.153	.060	.054	.051	

C Range: 0 - 360DEG
C Interval: 10.0DEG
Test Speed: HIGH
Temperature:25.3°C
Operators:
Test Date:03 January 2023

γ Range: 0 - 170DEG
γ Interval: 5.0DEG
Test System:EVERFINE GO-2000A_V1 SYSTEM V2.00.456
Humidity:65.0%
Test Distance:6.340m [K=1.0000]
Remarks:

UGR(Unified Glare Rating) Table

NAME: 95MALIA24LED/WH						TYPE:			WEIGHT: 1			
SPEC.:						DIM.: 270 x 120 x 110			SERIAL No.: 0			
MFR.: Elmark Industries JSC						SUR.: 4 circler			Shielding Angle:			
ceiling/cavity	0.7	0.7	0.5	0.5	0.3	0.7	0.7	0.5	0.5	0.3		
walls	0.5	0.3	0.5	0.3	0.3	0.5	0.3	0.5	0.3	0.3		
working plane	0.2	0.2	0.2	0.2	0.2	0.2	0.2	0.2	0.2	0.2		
Room dimensions		Viewed crosswise					Viewed endwise					
x = 2H	y = 2H	12.6	13.7	13.3	14.6	15.6	17.6	18.8	18.4	19.6	20.7	
	3H	15.0	16.1	15.8	16.9	18.0	21.6	22.6	22.4	23.5	24.5	
	4H	16.3	17.3	17.1	18.2	19.2	23.7	24.7	24.5	25.6	26.6	
	6H	17.6	18.6	18.5	19.5	20.6	26.0	27.0	26.8	27.8	28.9	
	8H	18.3	19.3	19.2	20.1	21.2	27.2	28.2	28.1	29.1	30.2	
	12H	19.1	20.0	19.9	20.8	22.0	28.6	29.6	29.5	30.4	31.5	
	4H	2H	15.3	16.3	16.1	17.2	18.3	18.3	19.3	19.1	20.2	21.3
		3H	17.9	18.8	18.7	19.7	20.8	22.5	23.4	23.3	24.2	25.4
		4H	19.3	20.1	20.1	21.0	22.1	24.8	25.6	25.6	26.5	27.6
		6H	20.6	21.4	21.5	22.3	23.4	27.3	28.0	28.2	29.0	30.1
		8H	21.3	22.0	22.2	22.9	24.1	28.7	29.4	29.6	30.3	31.5
		12H	22.0	22.7	22.9	23.6	24.8	30.2	30.8	31.1	31.8	33.0
	8H	4H	21.5	22.2	22.4	23.1	24.3	25.2	25.9	26.1	26.9	28.0
		6H	23.3	23.9	24.2	24.8	26.0	28.1	28.7	29.0	29.6	30.8
		8H	24.2	24.7	25.1	25.7	26.9	29.7	30.2	30.6	31.2	32.4
		12H	25.1	25.5	26.0	26.5	27.7	31.5	31.9	32.4	32.9	34.2
	12H	4H	22.2	22.9	23.1	23.8	25.0	25.3	25.9	26.2	26.9	28.1
		6H	24.3	24.9	25.3	25.8	27.0	28.3	28.8	29.2	29.7	31.0
		8H	25.4	25.9	26.4	26.9	28.1	30.0	30.5	30.9	31.4	32.7
Variations with the observer position at spacings(CIE Pub.117):												
S = 1.0H		+ 0.1 / - 0.1					+ 0.1 / - 0.1					
1.5H		+ 0.1 / - 0.1					+ 0.2 / - 0.3					
2.0H		+ 0.2 / - 0.3					+ 0.3 / - 0.4					

CIE Pub.117, 1320 lm Total Lamp Luminous Flux Correct (8log(F/F0) = 1.0)
Area: 0.0226865 m2

C Range: 0 - 360DEG
C Interval: 10.0DEG
Test Speed: HIGH
Temperature:25.3°C
Operators:
Test Date:03 January 2023

γ Range: 0 - 170DEG
γ Interval: 5.0DEG
Test System:EVERFINE GO-2000A_V1 SYSTEM V2.00.456
Humidity:65.0%
Test Distance:6.340m [K=1.0000]
Remarks:

UTILIZATION FACTORS TABLE

NAME: 95MALIA24LED/WH	TYPE:	WEIGHT: 1
SPEC.:	DIM.: 270 x 120 x 110	SERIAL No.: 0
MFR.: Elmark Industries JSC	SUR.: 4 circler	Shielding Angle:

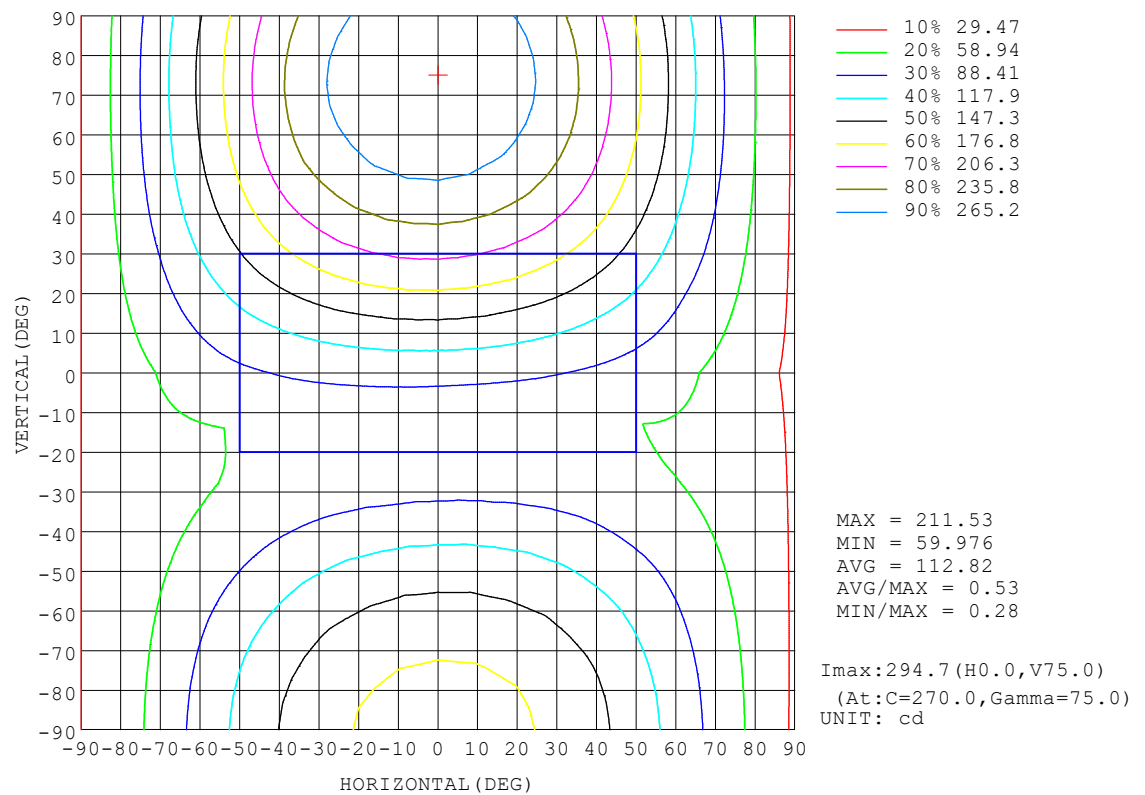
REFLECTANCE										
Ceiling	0.8	0.8	0.8	0.7	0.7	0.7	0.5	0.5	0.5	0
Walls	0.7	0.5	0.3	0.7	0.5	0.3	0.7	0.5	0.3	0
Working plane	0.2	0.2	0.2	0.2	0.2	0.2	0.2	0.2	0.2	0
ROOM INDEX	UTILIZATION FACTORS (PERCENT) $k(RI) \times RCR = 5$									
$k = 0.60$	43	28	19	41	27	19	38	25	18	9
0.80	53	36	26	50	35	25	46	32	24	13
1.00	62	44	33	58	42	32	52	41	30	17
1.25	70	53	41	66	50	39	58	45	36	21
1.50	76	59	47	71	56	45	63	50	41	24
2.00	85	70	58	80	66	55	70	58	49	30
2.50	91	77	65	85	72	62	74	64	55	34
3.00	96	83	72	90	78	68	78	68	60	37
4.00	103	91	81	96	85	77	83	75	68	42
5.00	107	97	88	99	90	82	86	79	72	46
ROOM INDEX	UF(total)									Direct
According to DIN EN 13032-2 2004			Suspended					SHRNOM = 1.25		

C Range: 0 - 360DEG
C Interval: 10.0DEG
Test Speed: HIGH
Temperature:25.3°C
Operators:
Test Date:03 January 2023

γ Range: 0 - 170DEG
 γ Interval: 5.0DEG
Test System:EVERFINE GO-2000A_V1 SYSTEM V2.00.456
Humidity:65.0%
Test Distance:6.340m [K=1.0000]
Remarks:

ISOCANDELA DIAGRAM

NAME: 95MALIA24LED/WH	TYPE:	WEIGHT: 1
SPEC.:	DIM.: 270 x 120 x 110	SERIAL No.: 0
MFR.: Elmark Industries JSC	SUR.: 4 circler	Shielding Angle:

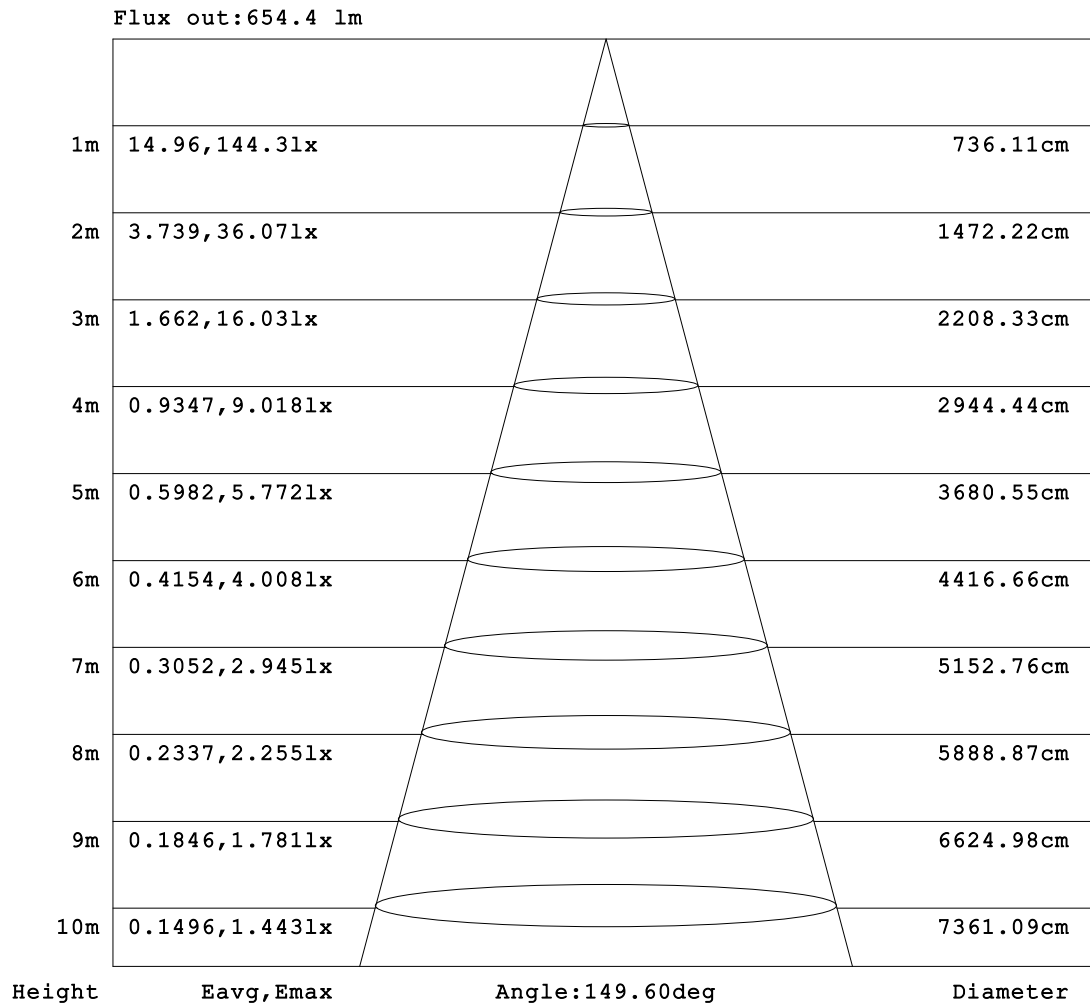


C Range: 0 - 360DEG
C Interval: 10.0DEG
Test Speed: HIGH
Temperature: 25.3°C
Operators:
Test Date: 03 January 2023

γ Range: 0 - 170DEG
γ Interval: 5.0DEG
Test System: EVERFINE GO-2000A_V1 SYSTEM V2.00.456
Humidity: 65.0%
Test Distance: 6.340m [K=1.0000]
Remarks:

AAI Figure

NAME: 95MALIA24LED/WH	TYPE:	WEIGHT: 1
SPEC.:	DIM.: 270 x 120 x 110	SERIAL No.: 0
MFR.: Elmark Industries JSC	SUR.: 4 circler	Shielding Angle:



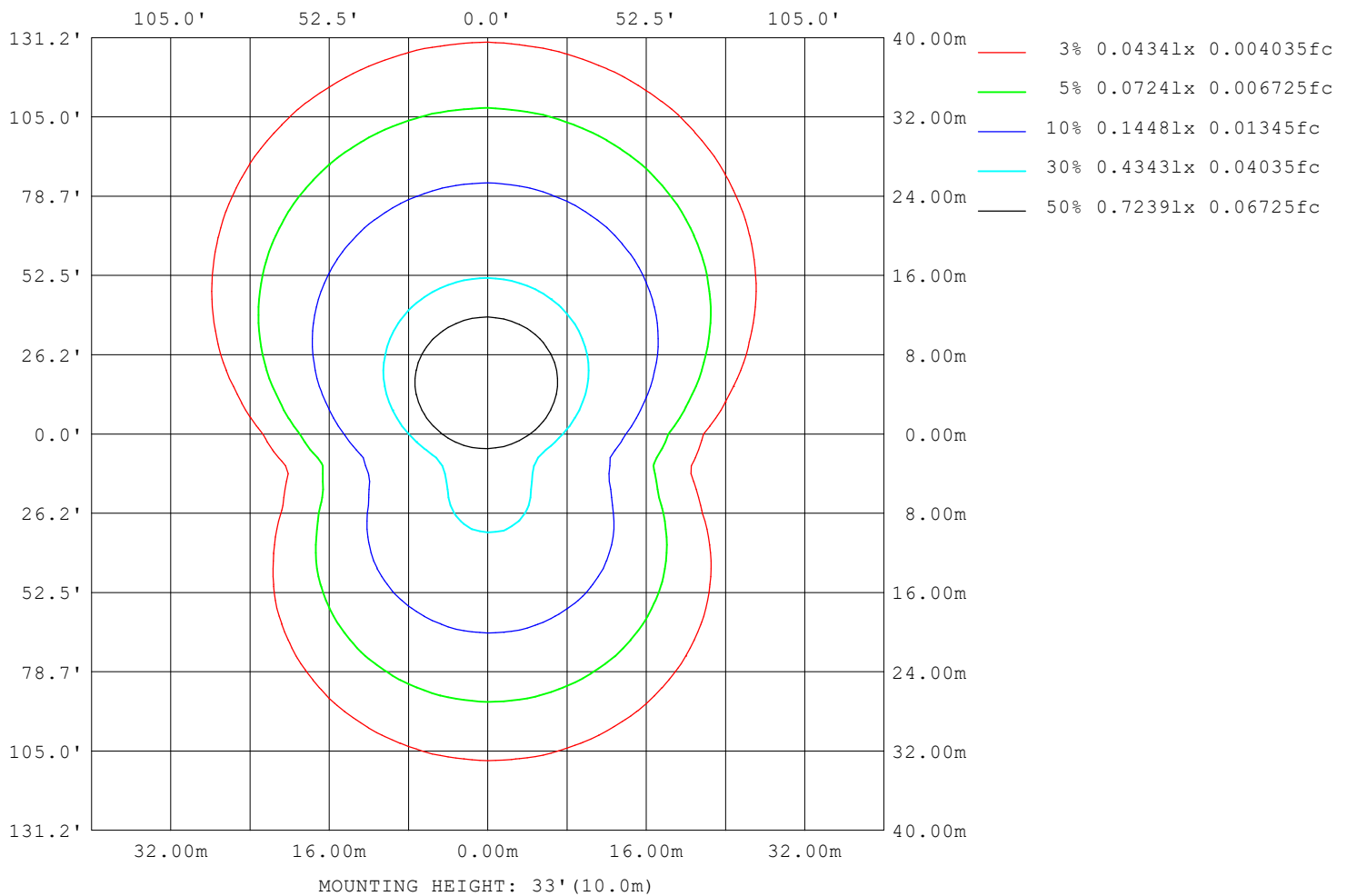
Note: The Curves indicate the illuminated area and the average illumination when the luminaire is at different distance.

C Range: 0 - 360DEG
 C Interval: 10.0DEG
 Test Speed: HIGH
 Temperature: 25.3°C
 Operators:
 Test Date: 03 January 2023

γ Range: 0 - 170DEG
 γ Interval: 5.0DEG
 Test System: EVERFINE GO-2000A_V1 SYSTEM V2.00.456
 Humidity: 65.0%
 Test Distance: 6.340m [K=1.0000]
 Remarks:

ISOLUX DIAGRAM

NAME: 95MALIA24LED/WH	TYPE:	WEIGHT: 1
SPEC.:	DIM.: 270 x 120 x 110	SERIAL No.: 0
MFR.: Elmark Industries JSC	SUR.: 4 circler	Shielding Angle:



C Range: 0 - 360DEG
 C Interval: 10.0DEG
 Test Speed: HIGH
 Temperature: 25.3°C
 Operators:
 Test Date: 03 January 2023

γ Range: 0 - 170DEG
 γ Interval: 5.0DEG
 Test System: EVERFINE GO-2000A_V1 SYSTEM V2.00.456
 Humidity: 65.0%
 Test Distance: 6.340m [K=1.0000]
 Remarks:

LED Avg.L Report

NAME: 95MALIA24LED/WH	TYPE:	WEIGHT: 1
SPEC.:	DIM.: 270 x 120 x 110	SERIAL No.: 0
MFR.: Elmark Industries JSC	SUR.: 4 circler	Shielding Angle:

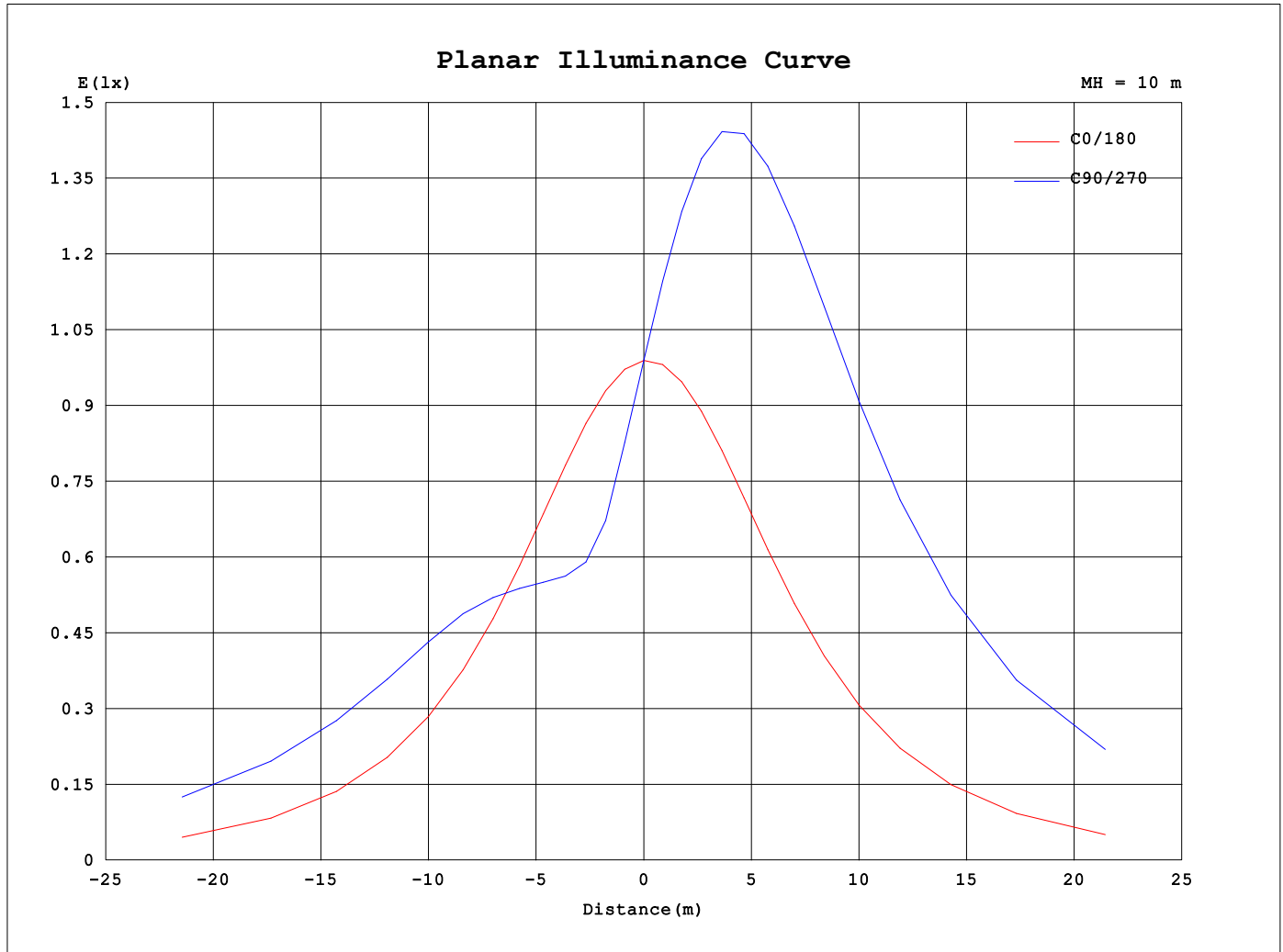
AvgL	cd/m2
L_0~180 (65) av	6672
L_0~180 (75) av	8419
L_0~180 (85) av	17031
L_90~270 (65) av	23788
L_90~270 (75) av	40362
L_90~270 (85) av	120375
L_45 (65) av	17569
L_45 (75) av	29501
L_45 (85) av	87299

Standard: GB/T 29293-2012

C Range: 0 - 360DEG
C Interval: 10.0DEG
Test Speed: HIGH
Temperature:25.3°C
Operators:
Test Date:03 January 2023

γ Range: 0 - 170DEG
γ Interval: 5.0DEG
Test System:EVERFINE GO-2000A_V1 SYSTEM V2.00.456
Humidity:65.0%
Test Distance:6.340m [K=1.0000]
Remarks:

Planar Illuminance Curve



C Range: 0 - 360DEG
 C Interval: 10.0DEG
 Test Speed: HIGH
 Temperature: 25.3°C
 Operators:
 Test Date: 03 January 2023

γ Range: 0 - 170DEG
 γ Interval: 5.0DEG
 Test System: EVERFINE GO-2000A_V1 SYSTEM V2.00.456
 Humidity: 65.0%
 Test Distance: 6.340m [K=1.0000]
 Remarks:

LUMINOUS DISTRIBUTION INTENSITY DATA

NAME: 95MALIA24LED/WH	TYPE:	WEIGHT: 1
SPEC.:	DIM.: 270 x 120 x 110	SERIAL No.: 0
MFR.: Elmark Industries JSC	SUR.: 4 circler	Shielding Angle:

Table--1

UNIT: cd

C (DEG) γ (DEG)	0	10	20	30	40	50	60	70	80	90	100	110	120	130	140	150	160	170	180
0	98.9	98.9	98.9	98.9	98.9	98.9	98.9	98.9	98.9	98.9	98.9	98.9	98.9	98.9	98.9	98.9	98.9	98.9	98.9
5	98.3	95.5	92.9	90.5	88.7	86.7	85.6	84.3	84.1	83.6	84.2	84.6	86.0	87.2	89.4	91.3	93.7	96.4	99.2
10	97.3	91.9	86.9	82.5	79.0	75.6	73.5	71.5	70.8	70.3	71.0	72.0	74.2	76.6	80.2	83.9	88.5	93.6	99.1
15	95.9	88.1	81.0	74.9	70.1	66.9	66.2	65.5	65.8	65.4	65.7	65.5	66.3	67.4	71.7	76.8	83.2	90.5	98.6
20	94.2	84.1	75.3	68.1	65.8	65.4	66.5	67.0	68.0	67.7	67.7	66.6	66.0	65.1	66.0	70.2	78.0	87.2	97.7
25	92.1	80.0	69.7	65.1	65.7	67.4	70.3	72.1	74.0	73.9	73.5	71.3	69.3	66.4	65.2	65.5	72.9	83.6	96.3
30	89.7	75.9	65.7	64.8	67.9	71.8	76.8	80.0	82.8	82.8	82.1	78.6	75.0	70.0	66.4	64.2	68.0	80.0	94.6
35	86.9	71.7	63.9	65.8	71.7	78.1	85.3	90.6	94.8	94.6	93.6	88.3	82.7	75.4	69.2	64.4	64.4	76.3	92.5
40	83.9	67.5	63.2	68.0	76.8	86.3	96.7	103	109	109	107	101	93.1	82.3	73.3	65.4	62.6	72.4	89.9
45	80.4	63.7	63.0	70.9	83.2	96.3	109	116	122	122	121	113	104	91.2	78.2	67.2	61.4	68.3	86.9
50	76.6	60.5	63.2	74.3	90.9	106	120	128	135	135	133	125	115	101	84.5	69.3	60.6	63.8	83.5
55	72.3	57.6	63.9	78.9	98.7	116	131	139	146	146	145	136	126	109	91.4	72.5	60.1	58.8	79.3
60	66.7	54.6	65.2	84.3	106	125	140	150	157	157	155	146	135	118	98.3	76.7	60.1	53.7	74.0
65	60.2	52.0	67.8	90.0	113	132	149	159	166	166	164	155	144	125	105	81.2	61.2	49.4	67.7
70	53.2	50.5	70.6	95.1	120	139	156	166	173	174	172	163	151	132	111	85.8	62.8	46.1	60.7
75	45.8	49.9	73.3	99.6	125	145	163	172	179	180	178	169	157	138	116	90.0	64.6	44.1	53.1
80	38.1	50.1	75.8	103	129	150	167	177	184	184	182	174	162	143	120	93.4	66.4	43.1	45.1
85	30.5	50.8	78.0	106	132	153	170	180	187	187	185	177	165	146	123	96.0	68.1	43.1	36.9
90	25.5	51.8	79.5	108	134	155	172	181	188	188	187	178	166	147	125	97.8	69.4	43.6	29.4
95	27.5	54.1	81.8	110	136	157	174	183	190	190	188	180	168	149	127	100	71.8	45.8	28.7
100	30.0	56.3	83.8	112	137	158	174	184	191	191	189	181	169	151	129	102	73.7	47.9	28.0
105	32.3	58.1	85.1	113	138	158	174	184	190	191	188	180	169	151	129	103	75.2	49.6	28.4
110	34.2	59.3	85.9	113	137	157	172	182	188	189	187	179	167	150	129	103	76.2	50.7	29.4
115	35.8	60.1	86.1	112	135	154	170	179	186	186	184	176	165	148	128	103	76.7	51.4	30.2
120	37.0	60.1	85.7	110	133	151	166	175	181	182	180	172	161	145	125	102	76.6	51.7	30.9
125	35.5	55.3	83.4	108	129	146	161	169	176	176	174	166	156	140	122	99.9	76.0	48.8	28.9
130	31.9	46.8	79.2	105	125	141	154	163	169	169	167	160	150	135	118	97.2	74.0	42.7	25.0
135	26.7	38.8	75.6	101	120	134	147	155	160	161	159	152	143	129	113	93.9	69.7	35.0	20.8
140	21.8	33.4	69.8	96.2	113	127	138	146	151	151	149	143	134	122	108	89.8	63.2	28.1	18.2
145	21.1	31.8	64.4	91.0	106	118	129	135	140	140	139	133	125	114	101	83.9	55.9	25.3	18.9
150	23.4	28.9	55.7	79.6	96.0	107	116	123	128	128	127	122	115	105	93.3	73.0	46.7	24.8	19.1
155	21.9	26.2	41.5	62.3	78.5	91.5	101	107	111	113	113	110	103	93.0	77.5	58.5	35.9	23.6	17.2
160	17.7	21.4	25.9	41.3	54.4	67.7	79.4	87.7	92.2	93.8	93.4	90.1	83.3	72.0	56.5	38.9	25.9	21.1	14.7
165	17.0	16.4	15.2	18.3	29.1	38.2	47.0	53.9	58.5	60.7	61.1	59.0	53.8	43.9	31.2	20.7	19.4	18.8	14.5
170	10.3	10.1	8.36	6.70	5.94	8.78	14.6	18.5	22.1	24.1	24.8	22.9	19.1	12.3	11.6	12.6	12.9	9.74	10.9
175	0.00	0.00	0.00	0.00	0.00	0.00	0.00	0.00	0.00	0.00	0.00	0.00	0.00	0.00	0.00	0.00	0.00	0.00	0.00
180	0.00	0.00	0.00	0.00	0.00	0.00	0.00	0.00	0.00	0.00	0.00	0.00	0.00	0.00	0.00	0.00	0.00	0.00	0.00

C Range: 0 - 360DEG

C Interval: 10.0DEG

Test Speed: HIGH

Temperature:25.3°C

Operators:

Test Date:03 January 2023

γ Range: 0 - 170DEG

γ Interval: 5.0DEG

Test System:EVERFINE GO-2000A_V1 SYSTEM V2.00.456

Humidity:65.0%

Test Distance:6.340m [K=1.0000]

Remarks:

LUMINOUS DISTRIBUTION INTENSITY DATA

NAME: 95MALIA24LED/WH	TYPE:	WEIGHT: 1
SPEC.:	DIM.: 270 x 120 x 110	SERIAL No.: 0
MFR.: Elmark Industries JSC	SUR.: 4 circler	Shielding Angle:

Table--2

UNIT: cd

C (DEG) γ (DEG)	190	200	210	220	230	240	250	260	270	280	290	300	310	320	330	340	350		
0	98.9	98.9	98.9	98.9	98.9	98.9	98.9	98.9	98.9	98.9	98.9	98.9	98.9	98.9	98.9	98.9	98.9		
5	102	105	107	110	112	114	115	116	116	115	115	113	111	109	107	104	101		
10	105	110	116	121	126	130	132	134	134	134	131	129	124	120	114	109	103		
15	107	116	125	133	140	146	151	154	154	153	149	145	138	130	122	113	104		
20	109	121	133	145	155	163	169	173	174	172	167	161	151	141	129	117	105		
25	110	125	141	156	169	180	187	193	193	191	185	177	165	151	136	121	106		
30	111	129	148	167	182	196	205	211	211	209	202	192	177	161	142	124	106		
35	111	133	155	177	195	211	220	228	228	226	217	206	189	170	148	126	105		
40	111	135	161	186	206	224	235	243	243	241	231	218	199	178	153	127	104		
45	110	137	166	193	216	235	247	256	257	254	243	229	208	185	156	128	102		
50	108	138	169	199	224	245	258	268	268	265	254	239	216	190	159	128	99.8		
55	105	137	171	204	231	253	267	277	278	275	262	246	222	193	160	127	96.4		
60	102	135	171	206	235	259	274	284	285	282	269	252	226	195	160	124	92.1		
65	96.9	132	170	207	238	263	278	289	290	287	273	256	228	195	158	121	87.1		
70	91.7	128	167	206	238	265	281	292	293	289	276	258	228	194	155	116	81.7		
75	85.9	123	163	203	237	265	281	293	294	290	276	257	226	191	150	111	75.9		
80	79.6	117	158	199	233	263	279	292	293	288	274	255	222	187	145	105	69.7		
85	73.0	111	153	194	229	258	275	288	289	284	270	250	217	181	140	98.4	63.2		
90	67.3	105	146	187	222	252	269	281	282	278	263	244	211	174	133	92.2	57.4		
95	63.4	99.8	140	181	216	246	263	275	276	272	257	237	205	169	127	87.5	54.0		
100	55.2	89.7	130	171	206	236	254	266	267	263	248	228	195	159	118	78.2	47.3		
105	44.5	75.4	115	155	189	220	238	252	253	249	233	211	179	144	103	65.2	38.3		
110	33.6	58.6	95.7	135	169	198	218	231	233	228	212	190	158	124	85.2	50.2	29.5		
115	25.6	41.5	74.8	112	144	173	192	206	208	203	187	165	135	101	65.4	35.5	23.7		
120	21.5	27.6	52.7	85.8	116	145	164	177	179	174	158	138	108	76.7	45.3	25.8	20.6		
125	18.4	21.4	32.2	59.0	87.0	114	132	144	146	142	127	107	79.4	51.7	27.5	20.3	18.0		
130	15.5	16.0	18.2	33.6	57.3	81.0	97.3	109	111	107	93.2	75.3	50.8	28.6	17.2	15.5	15.3		
135	13.1	11.9	11.5	13.7	29.2	48.2	62.6	72.6	74.2	70.7	59.1	43.6	24.6	11.8	11.1	11.6	13.3		
140	11.5	9.68	6.97	5.65	8.02	18.8	29.3	37.1	38.5	35.7	26.7	15.7	6.20	5.40	6.86	9.99	12.3		
145	10.5	8.60	5.63	2.54	1.70	1.69	4.24	8.32	9.27	7.45	3.07	1.36	1.45	2.63	5.53	9.08	12.7		
150	11.6	8.55	6.21	3.17	1.38	1.13	1.09	1.07	1.08	1.05	1.05	1.06	1.29	2.96	6.40	8.89	14.7		
155	11.8	8.79	6.66	4.78	2.81	1.53	1.06	1.07	1.09	1.05	1.08	1.41	2.37	4.60	6.79	9.05	14.3		
160	12.7	8.82	6.98	5.53	4.36	3.17	1.94	1.09	1.05	1.10	1.84	2.79	3.91	5.39	6.85	9.94	15.3		
165	9.62	7.73	6.72	5.66	4.61	3.04	1.38	1.72	2.10	1.60	1.65	2.98	4.48	5.48	6.90	9.21	11.5		
170	6.04	4.94	4.93	4.47	3.12	1.86	1.15	1.16	1.14	1.15	1.14	1.62	2.93	4.47	5.70	6.53	7.48		
175	0.00	0.00	0.00	0.00	0.00	0.00	0.00	0.00	0.00	0.00	0.00	0.00	0.00	0.00	0.00	0.00	0.00		
180	0.00	0.00	0.00	0.00	0.00	0.00	0.00	0.00	0.00	0.00	0.00	0.00	0.00	0.00	0.00	0.00	0.00		

C Range: 0 - 360DEG

C Interval: 10.0DEG

Test Speed: HIGH

Temperature:25.3°C

Operators:

Test Date:03 January 2023

γ Range: 0 - 170DEG

γ Interval: 5.0DEG

Test System:EVERFINE GO-2000A_V1 SYSTEM V2.00.456

Humidity:65.0%

Test Distance:6.340m [K=1.0000]

Remarks: